

AGENDA

Meeting: Children's Select Committee
Place: Council Chamber - County Hall, Bythesea Road, Trowbridge, BA14 8JN
Date: Wednesday 24 January 2024
Time: 10.30 am

Please direct any enquiries on this Agenda to Max Hirst max.hirst@wiltshire.gov.uk of Democratic Services, County Hall, Bythesea Road, Trowbridge, direct line 01225718215 or email max.hirst@wiltshire.gov.uk

Press enquiries to Communications on direct lines (01225) 713114/713115.

This Agenda and all the documents referred to within it are available on the Council's website at www.wiltshire.gov.uk

Pre-meeting information briefing

The meeting will be preceded by a presentation starting at **9.30am**, in the meeting room.

Topic: Family Hubs - Spurgeons

Spurgeons, a UK family charity, was awarded a contract by Wiltshire Council to provide family hubs in local communities from April 2024.

This is an opportunity to meet representatives from Spurgeons, as well as find out more about the charity and its plans with regards to delivering Family Hubs.

All members and substitutes of the Children's Select Committee are welcome to attend.

Membership:

Cllr Jon Hubbard (Chairman)	Cllr Kelvin Nash
Cllr Jacqui Lay (Vice-Chairman)	Cllr Antonio Piazza
Cllr Helen Belcher OBE	Cllr Mike Sankey
Cllr Mary Champion	Cllr Jo Trigg
Cllr Caroline Corbin	Cllr Mark Verbinnen
Cllr Carole King	Cllr Bridget Wayman
Cllr Kathryn MacDermid	

Substitutes:

Cllr Trevor Carbin
Cllr Daniel Cave
Cllr Adrian Foster
Cllr Johnny Kidney
Cllr Jack Oatley

Cllr Sam Pearce-Kearney
Cllr Ricky Rogers
Cllr Martin Smith
Cllr Iain Wallis

Non-Elected Voting Members:

Dr Mike Thompson

Clifton Diocesan RC Representative

Non-Elected Non-Voting Members:

Nikki Barnett
John Hawkins
Maisy Humphrey
Declan Kiely

Further Education Representative
School Teacher Representative
Children & Young People's Representative
Children & Young People's Representative -
Substitute

Recording and Broadcasting Information

Wiltshire Council may record this meeting for live and/or subsequent broadcast. At the start of the meeting, the Chairman will confirm if all or part of the meeting is being recorded. The images and sound recordings may also be used for training purposes within the Council.

By submitting a statement or question for a meeting you are consenting that you may be recorded presenting this and that in any case your name will be made available on the public record. The meeting may also be recorded by the press or members of the public.

Any person or organisation choosing to film, record or broadcast any meeting of the Council, its Cabinet or committees is responsible for any claims or other liability resulting from them so doing and by choosing to film, record or broadcast proceedings they accept that they are required to indemnify the Council, its members and officers in relation to any such claims or liabilities.

Details of the Council's Guidance on the Recording and Webcasting of Meetings is available on request. Our privacy policy can be found [here](#).

Parking

To find car parks by area follow [this link](#). The three Wiltshire Council Hubs where most meetings will be held are as follows:

County Hall, Trowbridge
Bourne Hill, Salisbury
Monkton Park, Chippenham

County Hall and Monkton Park have some limited visitor parking. Please note for meetings at County Hall you will need to log your car's registration details upon your arrival in reception using the tablet provided. If you may be attending a meeting for more than 2 hours, please provide your registration details to the Democratic Services Officer, who will arrange for your stay to be extended.

Public Participation

Please see the agenda list on following pages for details of deadlines for submission of questions and statements for this meeting.

For extended details on meeting procedure, submission and scope of questions and other matters, please consult [Part 4 of the council's constitution](#).

The full constitution can be found at [this link](#).

Our privacy policy is found [here](#).

For assistance on these and other matters please contact the officer named above for details

AGENDA

Pre-meeting information briefing

The meeting will be preceded by a presentation starting at **9.30am**, in the meeting room.

Topic: Family Hubs - Spurgeons

Spurgeons, a UK family charity, was awarded a contract by Wiltshire Council to provide family hubs in local communities from April 2024.

This is an opportunity to meet representatives from Spurgeons, as well as find out more about the charity and its plans with regards to delivering Family Hubs.

All members and substitutes of the Children's Select Committee are welcome to attend.

PART I

Items to be considered while the meeting is open to the public

1 **Apologies**

To receive any apologies or substitutions for the meeting.

2 **Minutes of the Previous Meeting**

To approve and sign the minutes of the previous meetings held on 31 October 2023 and 7 December 2023.

3 **Declarations of Interest**

To receive any declarations of disclosable interests or dispensations granted by the Standards Committee.

4 **Chairman's Announcements**

To receive any announcements through the Chairman.

5 **Public Participation**

The Council welcomes contributions from members of the public.

Statements

If you would like to make a statement at this meeting on any item on this agenda, please register to do so at least 10 minutes prior to the meeting. Up to 3 speakers are permitted to speak for up to 3 minutes each on any agenda item. Please contact the officer named on the front of the agenda for any further clarification.

Questions

To receive any questions from members of the public or members of the Council

received in accordance with the constitution.

Those wishing to ask questions are required to give notice of any such questions in writing to the officer named on the front of this agenda no later than 5pm on **17 January 2024** in order to be guaranteed of a written response. In order to receive a verbal response questions must be submitted no later than 5pm on **19 January 2024**. Please contact the officer named on the front of this agenda for further advice. Questions may be asked without notice if the Chairman decides that the matter is urgent.

Details of any questions received will be circulated to Committee members prior to the meeting and made available at the meeting and on the Council's website.

6 **Regular updates**

Updates on information valuable for the committee, but unlikely to require a decision.

Members of the committee are therefore invited to indicate in advance of the meeting if they would like further information or have questions on these regular updates, so that relevant officers can be invited to attend the meeting.

6a **Update from Wiltshire Youth Voice Representative** *(Pages 9 - 12)*

An update including a summary of recent activities of the Wiltshire Youth Union (WYU) and Children in Care Council (CiCC).

6b **School Ofsted Judgements** *(Pages 13 - 20)*

An update including information regarding the most recent Ofsted Inspection reports, presenting an ongoing view of the effectiveness of schools as seen by Ofsted Inspection.

6c **DfE Changes - Update from Department for Education** *(Pages 21 - 24)*

An update on developments relating to children's services arising from the Department for Education.

6d **Working together to improve school attendance** *(Pages 25 - 26)*

The DfE published new non-statutory guidance in May 2022 to help schools, trusts, governing bodies and local authorities maintain high levels of school attendance. The guidance applies from September 2022.

This regular update is an opportunity for the committee to be aware of the latest requirements, as set out in the guidance.

6e **Schools Forum** *(Pages 27 - 28)*

To receive a very brief update highlighting key items from the last meeting of Schools Forum, to enable the Children's Select Committee to be informed in a timely manner of the work undertaken by the Schools Forum through the year.

Full agendas and minutes for the Schools Forum can be accessed here [Schools Forum | Wiltshire Council](#)

6f Corporate Parenting Panel (Pages 29 - 30)

To receive a very brief update highlighting key items from the last meeting of the Corporate Parenting Panel, to enable the Children's Select Committee members, as Corporate Parents, to be informed in a timely manner of the work undertaken by the Corporate Parenting Panel through the year.

6g Safety Valve update (Pages 31 - 32)

As agreed by the committee at its extraordinary meeting on 7 December 2023, to receive regular updates from officers on the development of the Safety Valve project, as well as input from the overview and scrutiny representative.

6h Directors' update

To receive a verbal update from Directors highlighting any key issues (current or emerging), successes or milestones in their respective areas since the last meeting of the committee, which may not require a full agenda item and are not covered elsewhere on this agenda.

This is also an opportunity for matters arising from the minutes of the previous meeting.

6i Cabinet Member and Portfolio Holders' update

To receive a verbal update from the Cabinet Member and / or Portfolio Holders highlighting any news, successes or milestones in their respective areas since the last meeting of the committee, which may not require a full agenda item and are not covered elsewhere on this agenda.

This is also an opportunity for matters arising from the minutes of the previous meeting.

6j Chair's update

To receive a verbal update from the chair on any work undertaken or news since the last meeting that would not require a full agenda item and would not be suitable under Chairman's Announcements (where no debate is allowed).

This is also an opportunity for matters arising from the minutes of the previous meeting.

7 Family Hubs

To receive a presentation from officers on the council's evaluation of the Family Hub pilot projects. The committee has also asked for information to be provided on the council's plans to monitor both the delivery and success of the Family Hubs.

8 School Health and Wellbeing survey (Pages 33 - 40)

To consider the attached report providing an update to Children's Select Committee on action taken in response to the findings of Wiltshire's Children and Young People's Health and Wellbeing Survey 2021, outlining plans for future health and wellbeing related surveys and seeking the support of the

committee to encourage schools to take part.

9 **Ofsted inspection outcome** (*Pages 41 - 44*)

To consider the attached report detailing the key points of the outcome and findings of the Ofsted's inspection of Wiltshire Council's Children Services conducted in September 2023.

10 **Dads Matter Too** (*Pages 45 - 50*)

When the committee considered the outcome of the review of the "Dads Matter Too" multi-agency project in [September 2023](#), it resolved to receive an update in January on:

1. the partnership's response to the learning and how this will be taken forward following consideration of the outcome of the review by the Families and Children's Systems Assurance Group, Safeguarding Vulnerable People's Partnership and the Under 1s Steering Group;
2. the evaluation of work with the Fatherhood Institute (expected November 2023).

11 **Youth provision and area board youth funding task group executive response** (*Pages 51 - 58*)

On [21 September 2023](#) the Children's Select Committee endorsed the Final Report of the Task Group. The Executive Response is included in this agenda for consideration by the committee.

12 **Forward Work Programme and proposed activities** (*Pages 59 - 66*)

The Committee is asked to note the attached documents showing the relevant items from the overview and scrutiny forward work programme and the latest version of the strategy list for the Children, Education and Skills directorate.

It should also be noted that the chair and vice-chair will soon be meeting with Executive Members and officers to gather information on service priorities for 2024 which would inform the forward work programme.

The committee is invited to consider, and endorse if appropriate, two future activities as detailed in the agenda.

13 **Date of Next Meeting**

To note that the next scheduled meeting is due to be held on Tuesday **12 March 2024** at County Hall, Trowbridge, starting at 10.30am.

14 **Urgent Items**

Any other items of business which the Chairman agrees to consider as a matter of urgency.

PART II

Items during whose consideration it is recommended that the public should be excluded because of the likelihood that exempt information would be disclosed

None

Voice and Participation Service

Children's Select Committee Update - January 24

Children in Care and Care Experienced Adults

Christmas Activity

1. 18 Children in Care Council members attended a Laser Tag Christmas activity, including 3 new members. The session was also attended by Cllr Laura Mayes and Director Jen Salter, giving them a unique opportunity to speak with young people about their experiences in Wiltshire. Cllr Mayes stated "It was fun to meet the young people and have some good chats – they are always so engaging." The young people also enjoyed the day giving them more opportunities to socialise among peers that share care experience.

Care Experienced Parent Group

2. Current membership of the group is 5 parents (mothers) and 6 children. The Group will be moving after February to the Trowbridge Hub at County Hall. The parents would like to explore sharing their views on a podcast and also being involved in discussions around how care experienced parents face discrimination linking in with the ongoing conversations about care experience being a protected characteristic. The group will help develop a plan on how these outcomes will become a reality.

Sessional Voice Ambassadors

3. The Voice and Participation Service have recruited 10 Sessional Voice Ambassadors. These roles are for people with lived experience of receiving services from social care to share their views and help coproduce initiatives. We have 8 care experienced individuals, 1 parent and 1 person who utilises SEND services.
4. The Voice Ambassadors have been involved in the following activities since coming into post.
 - a. Interviewing prospective foster carers
 - b. Speaking on the CiCC Cast Podcast
 - c. Interviewing for Senior Leadership Roles
 - d. Interviewing Volunteers that will become Independent Visitors.
 - e. Placement Supervisor Training (how to include young people in learning)
 - f. Ambassador co-delivered a workshop at Community Care Live on 10th October 2023
 - g. Peer inspection of the Youth Justice Service
 - h. Creating a 'what to expect' document for parents entering Child Protection

Mind of My Own App

- The team continues to lead on the Mind of My Own app, which allows children and young people to communicate directly to their workers by sending in statements and have their views heard, enabling them to participate in their own care planning.

In the last period 25 young person accounts have been created and 8 new practitioner accounts

Number of One Statements sent (by Practitioners and young people)	100
Number of Express Statements sent (by Practitioners and young people)	32
Total statements sent to Wiltshire Children's Services (One and Express)	132

One app Usage			
STATEMENT TYPE	SENT BY YOUNG PEOPLE	SENT BY PRACTITIONERS	TOTAL
Totals	52	48	100
Conference	0	4	4
Foster Care Review	3	0	3
My Life	12	22	34
My Wellbeing	6	4	10
Pathway	0	1	1
Post Meeting	0	1	1
Preparation	10	3	13
Problem	2	1	3
Share Good News	8	1	9
This Is Me	4	7	11

One app Usage			
STATEMENT TYPE	SENT BY YOUNG PEOPLE	SENT BY PRACTITIONERS	TOTAL
Totals	52	48	100
Worker Visit	7	4	11

Bright Spots Survey

6. Collaborating with Coram Voice and the University of Oxford, our involvement in the Bright Spots program signifies our ongoing dedication to enhancing well-being for children in care. We have launched 2 surveys, "Your Life, Your Care" and "Your Life After Care," these have now concluded, and we have had the following number of take up from the cohort.

Bright Spots Your Life, Your Care survey

Age Group	Total number of YP	No. of recorded responses	Response rate (%)
4-7	36	16	44%
8-11	40	28	70%
11- 17	301	93	31%
Totals	377	137	36%

Bright Spots Your Life Beyond Care survey

	Total	No. of recorded responses	Number of declined responses	Response rate (%)
Age Group				
18 – 24	316	102	1	32%

7. We are expecting to receive a full and comprehensive report from Coram Voice within 2 months that will tell the local authority how children in care and care leavers feel about their lives. We have achieved enough results for the

survey to be considered representative. This is a fantastic opportunity for us to fully understand how children and young people feel in general about being supported in the county.

New Workstreams

SEND Voice Lead Worker

8. The Team has recruited a new SEND Voice and Participation Lead Worker. The worker is due to start in early January. In this dynamic role, the primary focus is to actively engage with children and young people with SEND, gaining profound insights into their needs, concerns, and aspirations. This engagement extends to organising inspiring activities and initiatives that motivate participants to share their invaluable perspectives, ensuring their voices remain central to service planning and delivery. Through supporting research into lived experiences, conducting evaluations, and facilitating opportunities for scrutiny, the worker ensures that service user feedback becomes a driving force in enhancing and innovating services.
9. In the realm of decision-making, the worker plays a pivotal role in empowering children and young people with SEND to advocate for positive change, implementing a solution-focused approach and contributing to the development of a tailored voice strategy. Guiding professionals, collaborating with stakeholders, and measuring the success of voice initiatives contribute to continuous improvement, with regular reflections informing senior levels within Wiltshire Council and its partners.
10. The worker's active participation in meetings, forums, and partnerships, coupled with providing training for professionals, developing accessible consultation materials, and supporting recruitment processes, collectively amplify the positive influence of this role. The coordinated efforts of various roles within the service ensure an effective contribution to overarching goals and a lasting positive impact on the well-being of children and young people with SEND.

Families and Children's Volunteering

11. An integration of the Independent Visitor Scheme and Community involvement Scheme is taking place to create a Families and Children's Volunteering. The volunteering opportunities that are being offered include;
 - a. Independent Visitors
 - b. Community Mentors
 - c. Primary School Mentors
 - d. Referral Order Panel Members
 - e. Appropriate Adults
 - f. Parent Mentors

Joe Sutton Voice and Participation Manager

Wiltshire Council

Children's Select Committee

24 January 2024 (data correct at 31/12/2023)

School Ofsted Judgements

1. This report is a regular update for the **Children's Select Committee** and is focused upon Ofsted inspections in Wiltshire schools.
2. The report shows details of schools inspected **in the Autumn Term of 2023**. It provides updates on inspection judgements based on the inspection framework introduced in **September 2019** using the categories below:
 - Overall effectiveness
 - Quality of education
 - Behaviour and attitudes
 - Personal development
 - Effectiveness of leadership and management
 - Early years provision
 - Sixth form provision

Update

3. The data is correct as of **31 December 2023** and shows the number of inspections per phase for the academic year 2022-2023 (Table 1) and the inspections to date for the Autumn Term 2023 (Table 2) to provide a comparison:

Table 1

Phase of Education	01 Sept – 31 Oct 2022	01 Nov – 31 Dec 2022	01 Jan - 28 Feb 2023	01 Mar – 17 April 2023	18 Apr – 31 May 2023	1 Jun– 31 Aug 2023
Primary	6	25	10	9	11	10
Secondary/ Post-16	5	5	1	2	0	2
Special	0	0	0	0	0	2

Table 2

Phase of Education	01 Sept – 31 Oct 2023	01 Nov – 31 Dec 2023	01 Jan - 28 Feb 2024	01 Mar – 17 April 2024	18 Apr – 31 May 2024	1 Jun– 31 Aug 2024
Primary	5	13				
Secondary/ Post-16	0	1				
Special	0	0				

Inspections explained

4. A change took place in September 2022 from what had been defined previously as Section 8 and Section 5 inspections with the revised Ofsted handbook providing information about what are now termed **graded**, **ungraded** and **urgent inspections** of maintained schools and academies under sections 5 and 8 of the Education Act 2005.
5. Graded inspections use the full Ofsted framework and will grade the school for its Overall Effectiveness and against the key judgements grade descriptors as described in the Executive Summary above; this has remained unchanged from September 2022.
6. Ungraded inspections focus on determining if the school remains at the same grade as the previous inspection. This does not result in a graded judgement. The key areas of focus in these inspections will be:
 - The Quality of Education and Safeguarding (as in a graded inspection)
 - Behaviour
 - Gaming and off-rolling
 - Pupils' wider development: breadth of curriculum (beyond academic, vocational or technical) / SMSC / careers provision (secondary schools)
 - Workload
7. Published inspection outcomes of all schools inspected in the Autumn Term 2023, are collated below.

School name (Web address to access Ofsted report below)	Status	Date of inspection	OE (previous)	Quality of education	Behaviour & attitudes	Personal development	Leadership & management	Early years provision	Sixth form provision
2023-2023 Academic year									
Oaksey CE Primary School Oaksey CofE Primary School - Open - Find an Inspection Report - Ofsted	Maintained	28/09/2023 Graded	G (G)	G	G	G	G	G	
Marden Vale CE Primary School Marden Vale CofE Academy - Open - Find an Inspection Report - Ofsted	Academy	19/09/2023 Graded	RI (RI)	RI	G	RI	RI	RI	
Bitham Brook Primary School **** Bitham Brook Primary School - Open - Find an Inspection Report - Ofsted	Maintained	21/06/2023 Graded	G (G)	G	G	G	G	G	
Durrington CE Junior School Durrington Junior School - Open - Find an Inspection Report - Ofsted	Maintained	01/11/2023 Ungraded	G (G)						
Dilton Marsh CE Primary School Dilton Marsh CofE Primary School - Open - Find an Inspection Report - Ofsted	Academy	01/11/2023 Graded	G (RI)	G	G	G	G	G	
Sutton Benger CE Primary School Sutton Benger Church of England Primary School - Open - Find an Inspection Report - Ofsted	Academy	02/11/2023 Graded	G (RI)	G	G	G	G	G	
King's Gate Primary School***** King's Gate Primary School - Open - Find an Inspection Report - Ofsted	Academy	08/11/2023 Graded	G	G	G	G	G	G	
Hardenhuish Secondary School Hardenhuish School - Open - Find an Inspection Report - Ofsted	Academy	01/11/2023 Ungraded	G (G)						
St George;s Catholic School – Warminster St George's Catholic Primary School, Warminster - Open - Find an Inspection Report - Ofsted	Maintained	08/11/2023 Graded	RI (RI)	RI	G	G	RI	RI	
West Ashton CE Primary School West Ashton Church of England Primary School - Open - Find an Inspection Report - Ofsted	Academy	15/11/2023 Graded	G (RI)	G	G	G	G	G	

Seagry CE Primary School Seagry Church of England Primary School - Open - Find an Inspection Report - Ofsted	Academy	15/11/2023 Graded	G (G)	G	G	G	G	G	
---	---------	----------------------	----------	---	---	---	---	---	--

* There has been no change to this school's overall judgement of good as a result of this ungraded (section 8) inspection. However, the evidence gathered suggests that the inspection grade might not be as high if a graded (section 5) inspection were carried out now. Inspectors are recommending the next inspection to be a graded inspection.

** There has been no change to this school's overall judgement of good as a result of this ungraded (section 8) inspection. However, there is enough evidence of improved performance to suggest that the school could be judged outstanding if we were to carry out a graded (section 5) inspection now. The school's next inspection will be a graded inspection.

*** There has been no change to this school's overall judgement of outstanding as a result of this ungraded (section 8) inspection. However, the evidence gathered suggests that the inspection grade might not be as high if a graded (section 5) inspection were carried out now. Inspectors are recommending the next inspection to be a graded inspection.

**** The school was inspected in the 2022-2023 academic year, there was a delay in the report being published.

***** This school is newly opened, so there are no previous published inspections for this school and no predecessor school.

Please note that *, ** and *** are not relevant in the context of this report.

Schools inspected and awaiting published reports	Type
St Michael's Primary School - Aldbourne	Maintained Primary
Fynamore Primary School	Maintained Primary
Ogbourne CE Primary School	Academy Primary
Christian Malford CE Primary School	Academy Primary
Whiteparish All Saints CE Primary School	Maintained Primary
Princecroft Primary School	Maintained Primary

Table 1: Ofsted Inspection Outcomes October 2021 to Current – National, Southwest Region and Wiltshire. Schools graded Good or Outstanding

External data: NCER Primary and secondary schools.

	England	SW	Wiltshire
December 2023	89.2	86.8	83.0 ↑
October 2023	88.8	86.2	81.7
May 2023	88.2	85.6	81.6
March 2023	88.2	85.4	83.2
January 2023	88.4	85.6	82.4
October 2022	87.7	84.3	81.5
May 2022	87.3	83.6	82
March 2022	87.1	83.4	81.6
January 2022	86.5	83.1	81.1
October 2021	86	82	81

Table 2: Ofsted Inspection Outcomes October 2022 to Current – National, Southwest Region and Wiltshire. Pupils attending Good or Outstanding schools.

External data: NCER Primary and secondary schools.

	England	SW	Wiltshire
December 2023	88.4	87.0	89.3 ↑
October 2023	88.1	86.2	88.7
May 2023	87.4	86.1	87.9
March 2023	87.3	85.5	88.5
January 2023	87.5	85.7	88.4
October 2022	87.1	84.7	85.5

Table 3: Comparison table: OFSTED grades-maintained schools and academies in Wiltshire. (December 2023)

External data: NCER Primary and secondary schools.

	Outstanding	Good	Requires Improvement	Inadequate
All schools	8	76	14	2
Academy	8	69	18	5
Maintained	6	82	11	1

Table 4: Schools maintaining, improving and/or declining in Ofsted performance 31 December 2023 (2023-2024 Academic year to date – cumulative)

	Improving	Maintaining/No change	Declining
All schools	3	18	0
All schools*	3	18	0

*Includes ungraded inspection recommendations for a Section 5 graded inspection

Table 5: School Ofsted performance by phase – December 2023

	Outstanding	Good	Requires Improvement	Inadequate
Primary	7	75	15	3
Secondary	14	76	10	0
Special	0	100	0	0

Table 6: Inspection outcome analysis – key common strengths and areas of development from the Autumn Term 2023 Ofsted Published Inspection Reports

The overall profile for inspections undertaken in the Autumn Term has been a positive one, with schools either maintaining or improving their Ofsted grading which is encouraging. Both in the Academy and the Maintained sector, there has been no judgement that has been less than Requires Improvement and there is confidence that in both sectors, this will remain the same.

Other schools to note, that are not included in the above school information sections are those that have received a monitoring visit due to their inspection grade. We are pleased that both St Martin’s CE VA School and Pembroke Park Primary School were both judged as making effective progress following a previous inadequate inspection alongside Westbury Leigh CE VC Primary School; with the joined up work being recognised between the Academy Partner and the Local Authority in this context.

As a Local Authority it is also worth recognising the positive feedback that we as a Council have had in our knowledge of all our schools, whether maintained or academy with the following comment from Paul Williams (Senior HMI) following an Ofsted Education Engagement meeting: ‘We discussed those schools in your local authority that have been placed in a category of concern at their most recent inspection. We also considered schools that find themselves in particularly challenging circumstances... it was clear that your officers have a detailed understanding of the issues in those schools’

As a School Effectiveness team, we continue to know our schools extremely well, which is a credit to the professionals working with individual schools. This enables us to be both proactive and responsive in our work – whether at Trust or maintained school level.

The tables below show the consistently identified strengths and areas for improvement from all the inspections that have taken place in the Autumn Term. Please note there are some individual areas for improvement in each inspection report that is published but the information below highlights trends.

	Strengths (Common themes)
Autumn Term 2023	<ul style="list-style-type: none"> • Safeguarding systems, processes and culture • Phonics and reading, including an enjoyment of reading • Curriculum breadth and curriculum intent • Curriculum enrichment • Overall pastoral support • Student behaviour and attitudes

	Areas of development (Common themes)
Autumn Term 2023	<ul style="list-style-type: none"> • Improving the quality of writing • Inconsistency in assessment procedures • In some subjects, schools not identifying the important content it wants pupils to know

Conclusion

8. The overall profile of school Ofsted performance has shown an improvement in the Autumn Term. Further, there are no indications as yet, of those inspected that have yet to receive a published report, that this profile will change. In summary, we are expecting to see a further increase in the number of schools that are Requires Improvement receiving a Good judgement, closing the gap against National and the South-West in terms of the number of schools that are Good or better.

Author:

Andrew Best – Head of School Effectiveness

Contact details: andrew.best@wiltshire.gov.uk

This page is intentionally left blank

Wiltshire Council

Children's Select Committee

24 January 2024

DfE updates and changes – October 2023 to January 2024

National Citizen Service (NCS): guidance for schools and colleges **Guidance**

1. How to use NCS in a school or college to help develop students' skills and confidence. Replaced 'National Citizen Service: guidance for schools and colleges' with a new version reflecting the NCS strategy for 2023 to 2025 [Link](#) Updated 09/10/23
2. Wiltshire's position: Updated or new guidance that is published by the DfE is shared through the Heads Bulletin that schools receive on a weekly basis.

School and college security **Guidance**

3. Guidance to help schools and colleges manage their security effectively so they can meet their obligations. Change made: Updated the further guidance section of 'School and college security', and added a link to the Youth Endowment Fund toolkit [School and college security - GOV.UK \(www.gov.uk\)](#) Updated 09/10/23
4. Wiltshire's position: Updated or new guidance that is published by the DfE is shared through the Heads Bulletin that schools receive on a weekly basis.

Transforming children and young people's mental health provision **Transparency Data**

5. A summary of the delivery of commitments in the transforming children and young people's mental health provision green paper. Change made; Added a report on the 'Mental health support team school and college survey'. [Transforming children and young people's mental health provision - GOV.UK \(www.gov.uk\)](#) Updated 10/10/23
6. Wiltshire's position: Wiltshire has 3 Mental Health Support Teams in place and will bid to expand our coverage of schools when the next opportunity arises. The Council delivered the DfE assured Senior Mental Health Lead training to schools from 2021-2023. The latest figures show take-up of this CPD across Wiltshire is 80%, compared to 67% across the South West, and approximately 60% nationally.

To further support these national initiatives, Wiltshire schools will be taking part in Wiltshire's Children and Young People's Emotional Wellbeing Survey 2024. This survey is for all pupils in years 4 to 6 in primary and special school settings and years 8,10, 12 in secondary and special school settings, alongside all students in FE colleges The survey will run from 19th February until 20th March 2024 and participation is free for all settings, state, and independent schools.

National pupil projections: October 2023 **Official Statistics**

7. Projections for the number of pupils in schools by type of school and age group [Link](#) published 19/10/23
8. Wiltshire's position: The data published is available at national level only and shows that the population attending primary and nursery schools peaked in 2019 and the figures have been dropping since then. This is primarily due to the continued reductions in the birth numbers since 2013, although there was a larger drop in the population in 2021 which may have been connected to the pandemic. Figures have been stable for the two years since then but are expected to drop from 2024 onwards.

The peak in the secondary school population is projected to be in 2024 - 2025, followed by a drop throughout the rest of the projection period.

New measures to protect children's learning from strike action [Press Release](#)

9. Minimum service Levels to protect children and young people's education are set to be introduced in schools and colleges, the Government has announced [Link](#) published 20/10/23

10. Wiltshire's position: This information has been disseminated through the Heads Bulletins that schools receive on a weekly basis.

Education Secretary says parents can see sex education material [Press Release](#)

11. Education Secretary's letters make crystal clear that schools must share relationships, sex and health education (RSHE) curriculum material with parents [Education Secretary says parents can see sex education material - GOV.UK \(www.gov.uk\)](#) Published 23/10/23

12. Wiltshire's position: As a Council we encourage all our schools to share details of their Sex and Relationships Education material via their school websites, which is the principal route for schools in terms of sharing curriculum content. Regular PSHE updates and network meetings are provided for school staff and governors.

Secretary of State letters to schools about sharing curriculum resources with parents [Correspondence](#)

13. Letters clarifying schools' responsibilities to share teaching materials with parents, particularly relationships, sex and health education (RSHE) resources. Change made; Added a new letter from Rt Hon Gillian Keegan MP to schools about sharing curriculum resources. [Secretary of State letters to schools about sharing curriculum resources with parents - GOV.UK \(www.gov.uk\)](#) Updated 24/10/23

14. Wiltshire's position: As a Council we encourage all our schools to share details of their RSHE material via their school websites, which is the principal route for schools in terms of sharing curriculum content.

Government continues children's social care reform [Press Release](#)

15. Funding for over 460 new children's social worker apprenticeship opportunities across the country [Government continues children's social care reform - GOV.UK \(www.gov.uk\)](#) Published 25/10/23

16. Wiltshire's position: We were successful in our bid for funding for the DofE Apprenticeship scheme. We have successfully recruited 3 internal future apprentices for our first cohort starting 2024. DfE funding has meant that two year's worth of funding were confirmed however the third year has not been. Furthermore, we do not know the future position in further years which makes it hard for us to plan ahead. We have an existing Apprenticeship scheme via University of Gloucester and we have our first cohort graduating this winter. If we were able to plan ahead with the DofE apprenticeship alone, this would result in better use of time focussing on one apprenticeship route rather than two.

Wraparound childcare: guidance for local authorities [guidance](#)

17. Explains the role of local authorities and the funding they'll get to expand the availability of wraparound care in their areas from September 2024 [Wraparound childcare: guidance for local authorities - GOV.UK \(www.gov.uk\)](#) Published 27/10/23

18. Wiltshire's position We are currently mapping the provision of wraparound provision that we already have and identifying areas where we need more or new provision to be set up. We have been given delivery funding as well as capital to support the roll out of this initiative. Expressions of interest for capital funding will

be sought for those areas where we need to expand or create new provisions. We are focussing on maintaining and expanding the provisions that we already have, to protect those businesses.

Plans have been made for the internal staff that will need to be recruited and when we need these posts to be in place.

Education and training statistics for the UK: 2023 **National Statistics**

19. Data on schools, attainment, qualifications gained, education expenditure, further education and higher education in the UK [Education and training statistics for the UK: 2023 - GOV.UK \(www.gov.uk\)](https://www.gov.uk/government/statistics/education-and-training-statistics-for-the-uk-2023) Published 09/11/23

20. Wiltshire's position: As a Council we conduct our own internal analysis of data which provides us with insights in terms of our performance and enables us to compare Wiltshire with both national, regional and statistical neighbours. We provide summary information through our Performance Outcomes Groups, the Performance Outcomes Board and through presentations at Heads Briefings and other forums.

Termination warning notice to Pewsey Vale School **Correspondence**

21. Termination warning notice to the Pewsey Vale School (Single Academy Trust) in relation to Pewsey Vale School [Termination warning notice to Pewsey Vale School - GOV.UK \(www.gov.uk\)](https://www.gov.uk/government/statistics/termination-warning-notice-to-pewsey-vale-school) Published 22/09/23

22. Wiltshire's position: Pewsey Vale Secondary School is a Standalone Academy Trust. As a Local Authority we are working with the DfE Regional Director and her team alongside the school to ensure that the school becomes part of a Multi-Academy Trust moving forwards.

Promoting children and young people's mental health and wellbeing **Guidance**

23. Guidance on the 8 principles of a whole school or college approach to promoting mental health and wellbeing. Change made; Retagged as belonging to OHID (rather than PHE) [Promoting children and young people's mental health and wellbeing - GOV.UK \(www.gov.uk\)](https://www.gov.uk/government/guidance/promoting-children-and-young-peoples-mental-health-and-wellbeing) Updated 16/11/23

24. Wiltshire's position: Wiltshire use our Healthy Schools programme to support schools embed this guidance, alongside a wider approach to health and wellbeing. Following the Council's delivery of Senior Mental Health Lead training, a series of ongoing network meetings have been established to further embed this guidance and support school mental health leads.

More children score full marks in their times tables check **Press Release**

25. 29% of children scored full marks in their Multiplication Table Check in 2023, up from 27% in 2022 [More children score full marks in their times tables check - GOV.UK \(www.gov.uk\)](https://www.gov.uk/government/press-releases/2023/11/23/more-children-score-full-marks-in-their-times-tables-check) Published 23/11/23

26. Wiltshire's position: Analysis of the Wiltshire performance in the Multiplication Tables will be provided as part of a wider standards report for Children Select in March 2024.

Generative artificial intelligence in education call for evidence **Call for evidence outcome**

27. We're seeking views on how generative artificial intelligence (AI) is being used across education in England, and the opportunities and risks it presents. Change made, added summary of responses [Generative artificial intelligence in education call for evidence - GOV.UK \(www.gov.uk\)](https://www.gov.uk/government/call-for-evidence/generative-artificial-intelligence-in-education) updated 28/11/23

28. Wiltshire's position: This report will need to be analysed internally with any of the findings then disseminated accordingly.

How schools' narrow attainment gaps between ethnic groups **Research & Analysis**

29. A study to find out whether schools closing the ethnicity achievement gap have done so by focussing on ethnicity, or as a result of other approaches [How schools narrow attainment gaps between ethnic groups - GOV.UK \(www.gov.uk\)](#) published 30/11/23

30. Wiltshire's position: Wiltshire's Ethnic Minority and Traveller Achievement Service (EMTAS) helps schools secure good outcomes for Black and Minority Ethnic (BME) and English as an Additional Language (EAL) learners, including pupils from Traveller ethnicities, from Foundation Stage 2 onwards. The service consists of:

- Bilingual Assistants - peripatetic Teaching Assistants who work alongside learners in the classroom and support with home/school contact
- Specialist TAs who work with Traveller children in school and help build strong home/school partnerships
- Advisory Teachers who support schools with raising their own capacity through advice and training, and who can assess learners and make recommendations about provision

Childcare expansion capital grant funding **Guidance**

31. Local authority funding to support the provision of new early years entitlement and wraparound places

[Childcare expansion capital grant funding - GOV.UK \(www.gov.uk\)](#) published 30/11/23

32. Wiltshire's position: Wiltshire has received a grant allocation of £1,106,833 and will be working with providers to maximise the number of places available to Wiltshire families.

TITLE:	Working Together to Improve School Attendance
FOR CONSIDERATION BY:	Children's Select Committee
REPORT DATED:	10th January 2023
DIRECTOR:	Kathryn Davis Interim Director of Education and Skills
REPORT AUTHORS:	Karen Green Team Manager, Education Welfare

1. Purpose of Report

- 1.1 To provide a regular update on the Council's implementation of the 2022 DfE guidance 'Working Together to Improve School Attendance'.

2. Attendance Data

- 2.1 For the Autumn Term 2023-2024, the DfE Pupil Attendance and Absence data dashboard which provides live school attendance data shows that:

- National (England) attendance is 93.4%
- South West region attendance is 92.9%
- Wiltshire attendance is **93.6%**

We await the full published attendance data for the last academic year (2022-2023) and are aware that there is still some way to go to achieve the same attendance in Wiltshire that we had pre-pandemic (95.28%).

We are pleased that attendance in Wiltshire is on the right trajectory and that the work of the LA, schools and partners to support families with good attendance is reflected in the current data.

3. Communications

- 3.1 Wiltshire Council implemented an attendance communications strategy on 8th January 2024, utilising a range of assets for social media, digital screen graphics and posters. Materials have been shared with primary and secondary schools, GP practices and other partners.
- 3.2 The materials provide positive reminders about the importance of good school attendance, as well as acknowledging the challenges that some children and families may be experiencing. Reminders are shared about the support that is available from schools and from the Council's Education Welfare Service.



4. **Department for Education Engagement**

- 4.1 Sara Griffiths, DfE Attendance Adviser, completed her final visit with Wiltshire Council on 10th January 2024, following extremely positive reports on Wiltshire's implementation of the 'Working Together' guidance. We look forward to welcoming Adam Luke (Senior Policy Adviser, School Attendance, DfE) to Wiltshire in February 2024.

5. **Recommendation:**

- 5.1 For the committee to note this update.

Wiltshire Council

Children's Select Committee

24 January 2024

Schools Forum update

Key discussion points/issues from meeting of Schools Forum – 5 December 2023.

1. Updates from the joint meeting of the School Funding Working Group and SEN Working Group and from the Early Years Reference Group
2. National Funding Formulae for Schools and High Needs - 2024-25
3. Allocation of Funding for Pupil Growth 2024-25
4. Dedicated Schools Grant Consultations 2024-25
5. Additional Support for Maintained Schools in Financial Difficulty in 2023-24
6. Update on Safety Valve Plan (Part II report)

The next meeting of Schools Forum will be held on 18 January 2024 and Children's Select will receive an update at their meeting on 12 March 2024.

Agendas and minutes for Schools Forum can be accessed on: [Browse meetings - Schools Forum | Wiltshire Council](#)

This page is intentionally left blank

Wiltshire Council

Children's Select Committee

24 January 2024

Corporate Parenting Panel update

Key discussion points/issues from meeting of Corporate Parenting Panel – 21 November 2023.

1. Voice and Participation update
2. Update on Children's Placement Budget
3. Update on Placement Sufficiency
4. Update on approvals from Full Council – 17 October – relating to the revised Corporate Parenting Strategy 2023-2026, the National Care Leavers Covenant, pledge of commitment to the poem for our children and young people in care and exploration of progressing care experience as a protected characteristic
5. Updates from other Council Teams and other Representatives
6. Adoption Service Year End Report 2022-23
7. Second Phase Review into Children Residing in Independent Special Schools
8. Staying Close highlight report
9. Update from the Connect Service (formerly Motiv8)

The next meeting of the Panel will be on 23 January 2024 and Children's Select will receive an update at their meeting on 12 March 2024.

This page is intentionally left blank

Wiltshire Council

Children's Select Committee

24th January 2024

Safety Valve Update

Background

1. The Dedicated Schools Grant (DSG) is funding which local authorities in England receive to support schools. The DSG is split into four blocks which support different parts of the schools system.
2. One of these blocks is the High Needs Block which is used to support children and young people with Special Educational Needs and Disabilities (SEND). Since 2018/19 the High Needs Block has been under increasing pressure. This growth in expenditure has been seen in every council in England, and Wiltshire is no exception.
3. In Wiltshire from 2018/19 to 2022/23, this equated to a 51% growth in the number of children supported by an EHCP, and a 46% growth in the amount of money being spent from the High Needs Block. Over the same period, the money received into the High Needs Block from government only grew by 36%.
4. While High Needs Block income has not kept pace with the growth in demand, there are also changes that councils can make to respond to the changing strategic context.
5. The government introduced a statutory override which allows councils to hold their DSG deficit as a negative reserve on their balance sheet, walled off from the rest of the council's finances. This statutory override, however, is due to expire 31st March 2026 and at that point the cumulative unmitigated deficit could be £117.0m while the current forecast total general fund and earmarked reserves are £90m.
6. Safety Valve is a DfE programme to support councils that have a significant financial challenge with their High Needs Block. The invitation to join Safety Valve was received in August 2023 and if a deal can be successfully negotiated, and receives Secretary of State approval, the implementation phase begins in April 2024.
7. The High Needs Block Sustainability Plan for Wiltshire has been developed with stakeholders to identify improvements in our SEND system that will create better support for children and young people and their families, while addressing the financial challenges.

January update

8. Since the last Children's Select Committee meeting, Cabinet agreed the submission of the draft High Needs Block Sustainability Plan which happened on December 15th. An amended version of the plan was submitted on January 12th.
9. These amendments, which reflect comments from the DfE and Stakeholders during the drafting process, do not substantively change the plan. The amendments are as follows:

- a) The unmitigated pupil number forecast has been updated to include the children and young people currently awaiting assessment. Built into this is the assumption that the assessment backlog can be cleared within two years. This does not change the end position, but it does bring through a bulge of pupils in the 2024/25 and 2025/26 years.
- b) The unmitigated financial forecast has been updated to reflect the settlement and the updated 23/24 position. These changes have been rippled through the future years to provide a better financial forecast.
- c) The mitigated position has been updated in line with the above changes. This does not substantively change the outcome but does increase the final deficit balance by £1.2m to £137.2m. The contribution from the DfE will be a fixed figure so this rise increases the Local Authority contribution to the deficit. The previously reported range of £70-90m still reflects the expected contribution from Wiltshire Council.
- d) Milestones have been added to the plan to give more assurance that it is deliverable. Following advice from the DfE, some of these milestones have been brought forward so the benefit is realised more quickly, this is especially important for some of the early help projects.
- e) The narrative within the plan has undergone minor amendments to reflect comments received during the drafting process and to clarify terminology.

10. In addition, a request to the Secretary of State has been submitted for a block transfer above 0.5% from the Schools Block to the High Needs Block. For 2024/25 this figure is 0.55% and was submitted with support from Schools Forum.

11. A capital request to support this plan was also submitted to the DfE on 5th January 2024. This bid is for £5.7m to expand special schools places in the south of the county and will directly contribute towards delivery of Workstream 2.

12. The profile of the mitigated deficit is summarised as follows:

Provision Type	2023/24 £'000	2024/25 £'000	2025/26 £'000	2026/27 £'000	2027/28 £'000	2028/29 £'000
Plan Year	1	2	3	4	5	
Mainstream Provision	22,875	24,019	25,254	20,379	16,112	11,896
Resourced Provision	4,249	5,353	6,295	6,390	6,169	6,325
Special Schools	27,026	32,364	34,952	37,110	38,325	40,229
Independent and Non-maintained Special School Provision	20,207	19,705	19,024	15,110	6,100	4,143
Post 16 Provision	10,881	11,491	11,958	12,107	12,044	12,506
Alternative Provision	10,198	9,464	8,912	8,808	8,623	9,708
Therapies	560	560	773	782	792	801
Other High Needs Block expenditure	1,103	786	810	834	859	885
Total Expenditure	97,098	103,744	107,977	101,520	89,024	86,494
High Needs Block	-70,798	-73,465	-75,669	-77,939	-80,277	-82,685
Block Transfers	-1,797	-2,000	-3,754	-3,867	-3,983	-4,102
In Year Surplus (-)/Deficit(+)	24,504	28,280	28,555	19,715	4,765	-293
Surplus/Deficit from other DSG Blocks	-3,470	0				
Surplus/Deficit Brought Forward from Previous years	35,214	56,247	84,527	113,081	132,796	137,561
Total Deficit Balance	56,247	84,527	113,081	132,796	137,561	137,267

13. The decision to enter the Safety Valve deal will crystallise the requirement of a contribution from the council's resources which will in effect be the balance of the cumulative deficit set out in the plan less any contribution from the DfE. The council will be taking an approach of maximising all opportunities to set money aside in a specific earmarked reserve to fund the contribution required.

Wiltshire Council

Children's Select Committee

24 January 2024

Children and Young People's Health and Wellbeing Survey Update

Purpose of Report

1. The purpose of this report is to provide an update to Children's Select Committee on action taken in response to the findings of [Wiltshire's Children and Young People's Health and Wellbeing Survey 2021](#), to outline plans for future health and wellbeing related surveys and to seek the support of the committee to encourage schools to take part.

Relevance to the Council's Business Plan

2. Capturing the experience of children and young people in relation to their health and wellbeing aligns with all four guiding themes of the Council Business Plan: prevention and early intervention, improving social mobility and tackling inequalities, understanding communities, and working together.
3. Understanding gained from the survey findings also supports us to achieve the Business Plan goals of Wiltshire being a place where people get the best start in life, stay active, and feel safe.

Background

4. Children and Young People's Health and Wellbeing Surveys have been conducted through schools and colleges across Wiltshire for over 40 years. The relatively large number of respondents from more recent surveys (9,951 from 95 settings in 2017, and 7,499 from 78 settings in 2021) provide confidence that the findings are broadly representative of young people in Wiltshire.
5. The purpose of the surveys is to gain a better understanding of the experience of school-aged children and young people across Wiltshire both inside and outside school in relation to, for example, healthy lifestyles, risky behaviours like smoking and drinking, and emotional wellbeing. It is expected that the findings will be considered alongside service outcome data and qualitative data to:
 - inform Local Authority and Integrated Care Board commissioning decisions;
 - affect service and project developments; and
 - influence system-wide thinking through programmes such as Wiltshire's Family and Children's Transformation (FACT) Programme.
6. The survey findings are disseminated widely through key strategic groups and networks. Schools and colleges that participate receive setting-based reports comparing the responses from their pupils with the Wiltshire average to use in their Self-Evaluation Frameworks and to target school-based activities. In addition,

a Wiltshire-wide overview report and thematic reports are produced to inform strategic and operational decision making among key partners including local authority, education, health, police, and the voluntary sector. A series of infographics capturing key findings (Figure 1) were a new edition to the suite of resources following the last survey conducted in 2021.

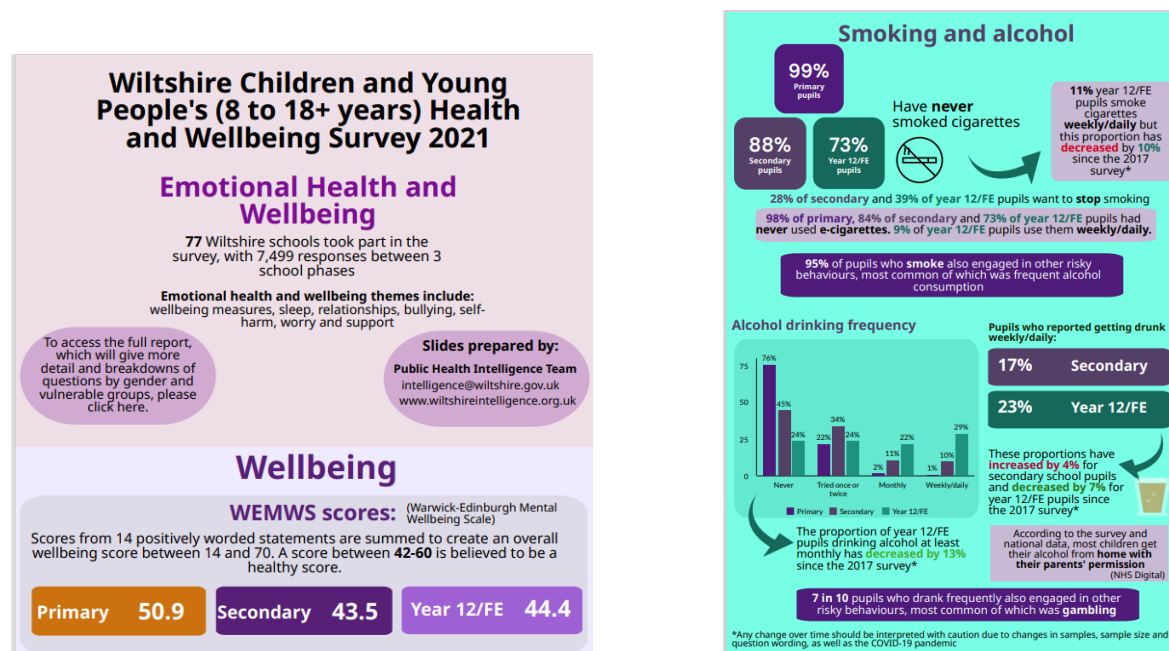


Figure 1: Examples of 2021 survey summary infographics

- An overview of the 2021 survey and key findings were presented at the Children's Select Committee on 6th July 2022, and a request was made for a future update on the action taken as a result of the survey findings.

Main Considerations

Feedback on awareness and use of survey

- In September 2023, schools, and partners from across the system working directly or indirectly with children, young people and families were asked to complete a short, anonymous questionnaire to feedback on their awareness of the Children and Young People's Health and Wellbeing survey reports, and whether or how they used the findings. There were two questionnaires:
 - For school staff - to which there were 33 responses from 28 schools, and
 - For anyone else delivering or commissioning services for children and young people in Wiltshire – to which there were 147 responses available for analysis.
- The responses may not be representative of how the survey data has been used across all agencies and partners in Wiltshire, as the numbers were relatively small, however, they provide a useful insight into how we can continue to improve our provision of data from the survey. The highlights from the feedback are summarised below.

10. School staff all reported using one or more of the reports generated by the health and wellbeing survey and the vast majority indicated that the different styles of report were either very useful or somewhat useful.
11. Staff from schools involved in the previous health and wellbeing survey all responded that the school focussed reports were useful.
12. The responses showed that the survey reports were used in a variety of ways by school staff, shown below in Figure 2.

How have you used the results of the survey? (tick all that apply)

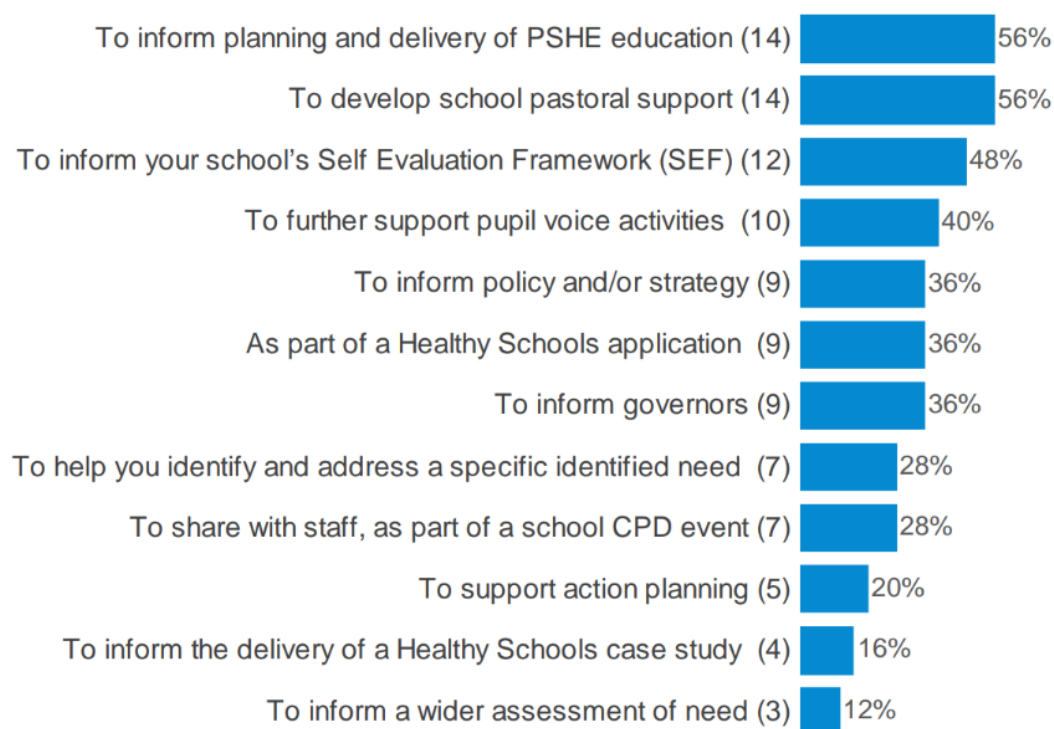


Figure 2: How school staff have used the survey results

13. Feedback from 147 colleagues working directly or indirectly with children and young people across the system widely (Local Authority, health, police, and voluntary sector) indicated that those who were aware of the reports on the survey findings found them useful to inform discussion and drive change both strategically and operationally.
14. However, nearly two thirds of respondents were not aware of the reports generated by the survey, thus highlighting the need to raise their profile and encourage greater usage.
15. Of those who were aware, almost all reported using the results of the survey in a variety of ways depicted below (Figure 3) and said action had been taken as a result.

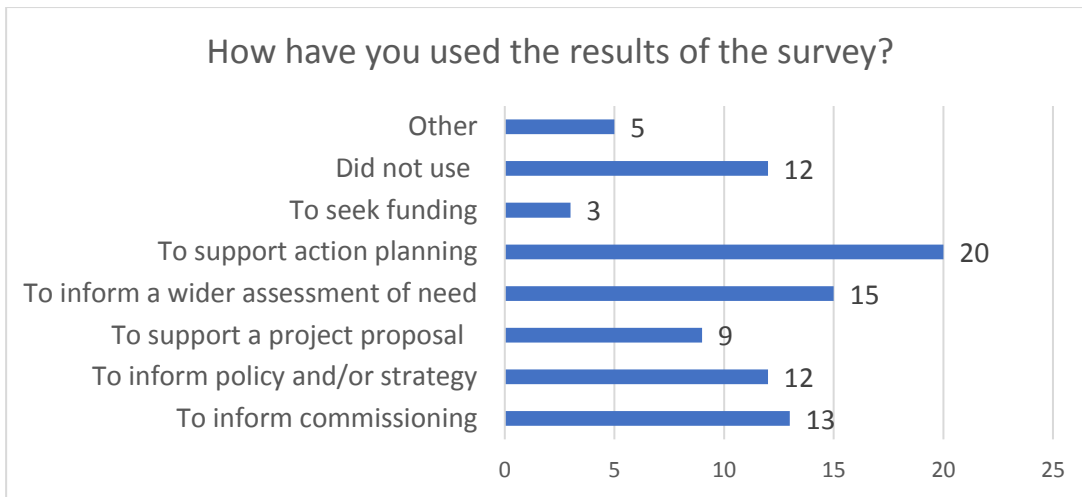


Figure 3: How have the results of the survey been used?

16. Specific examples of action taken were also reported and these have been grouped into the following themes:

- To inform local commissioning and strategy development (e.g. linking findings to the Disadvantaged Learner Strategy, and determining workstreams for the SEND Strategy Implementation Plan).
- To include in needs assessments (e.g. School Health Needs Assessments completed by the School Nursing Service)
- To inform service/ project delivery (e.g. the schools-based Phunky Foods Project)
- To influence the development of resources (e.g. for schools).
- To raise awareness of health and wellbeing issues identified through the survey (e.g. highlighting issues to councillors, using to guide themes in a staff newsletter).
- To inform workforce development (e.g. influencing continuous professional development priorities for practitioners).
- To improve understanding of the experience of children and young people from more vulnerable groups and adapt approaches on the frontline.

17. Case studies on how the survey data has been used were also shared by schools and colleagues, examples of which are summarised below.

School-based examples

18. There is evidence that schools are using the data to identify health priorities, to use a baseline against which to measure change following the implementation of an intervention and to support them to achieve the local Healthy Schools Award.

Box Primary School: evidencing health priorities (Oct 2022 – July 2023)

19. Box Primary School used data to select their health priorities (see quote below), addressed these using school-based interventions, demonstrated impact, and are keen for the next survey to inform their future work.
20. *“Evidence from Wiltshire Children and Young People's (8 to 18+ years) Health and Wellbeing Survey 2021 highlighted that only 67% of pupil at primary age feel they receive mental health support in school - which we still saw as a strikingly low number. We also feel physical health is hugely important for increasing children's mental health, so it was unnerving to find that only 49% of primary age children do 6 hours of exercise a week.”*
21. The school went on to implement interventions to increase activity and to introduce mindfulness strategies, and they gathered data to measure change. At the end of both projects, they were able to demonstrate a measurable increase in pupil's daily steps and activity, and a notable improvement in mindset.

Ludgershall Castle Primary School: Gold Healthy School Award (April 2021 – March 2022)

22. Ludgershall Castle Primary School showed how they used data from the survey to triangulate what staff were observing in relation to healthy eating and to identify a project to achieve their Gold Healthy Schools Award
23. *“School staff observed the unhealthy content of packed lunches over a period of time and were aware that work needed to be done to improve them. The school felt the Gold Healthy Schools Award was a good opportunity to do targeted work to improve the quality of packed lunches. We also referred back to our Wiltshire Children and Young People's Health and Wellbeing Survey 2018 and noted that a high number of children were eating crisps and chocolate at lunch times (packed lunches) and our recent data for 2021 confirmed that this was an area we need to improve on. Our last NCMP data showed that children in the Tidworth area had higher than average rates of obesity among children (both in reception and year 6).”*
24. Following the school's intervention, they provided data to show that children were consciously making healthier choices about the contents of their lunch box. Children eating fruit and vegetables had increased and there was a decrease in chocolate and crisps in lunchboxes.

St Nicholas Porton: identifying health priorities (Feb 2022 – Sept 2022)

25. *“From our Wiltshire Children & Young People's Health and Wellbeing Survey 2020 & 2021 the children in our school felt that they needed more support in making healthy food choices. They also responded that they regularly ate less healthy food choices such as crisps and chocolate – a percentage that was much higher than the Wiltshire average.”*
26. Following the schools Healthy School intervention and surveys to measure impact, the school reported: “Children choosing a portion of fruit or vegetable at snack time

increased from 50% to 94% at our last data collection in September 2022. Children choosing a snack increased from 71% to 76%”

St Peter's Academy: triangulating staff observation (Sept 2021- July 2022)

27. *“Since returning to school in September 2021, we have found the children, particularly in FS, Y2 and Y6 classes finding school life challenging. The Wiltshire Children and Young Persons Health and Wellbeing Survey 2021 reiterated this by highlighting that the KS2 children were feeling more stressed by school and in turn, staff were struggling to find the support they needed to cope. We felt that a whole school approach was essential to support staff morale, family relationships and for pupil engagement.”*

28. Following a Healthy Schools intervention some of the outcomes produced included:

- 72% of pupils being able to describe two or more different techniques to help them self-regulate their emotional wellbeing, compared to just 20% before the project began.
- 96% of pupils being able to name one way to self-regulate their emotions compared to 58% at the beginning of the project.
- 90% of pupils knowing a trusted adult they can talk to if they needed help, compared to 79% at the start of the project.
- 80% of pupils reporting that the school helps them learn about different emotions.
- And 81% of pupils believing that the school cares for them and how they are feeling.

Studley Green: Healthy School action planning (Summer 2020 - 2022)

29. *“Wiltshire Children and Young People’s Well-being Survey 2021 results reveal Studley Green Primary School has well-being indicators poorer than average for the County.”*

30. The school focussed particularly on data related to bullying and feelings of safety at school. In response, they developed and delivered an action plan for their Wiltshire Healthy Schools Case study showing areas they set out to introduce or improve on and the intended impact and measurable outcomes. Following the plan there are documents that provide evidence of the measurable outcomes.

Strategic and commissioning examples

Emotional wellbeing

31. Data on emotional wellbeing informed the specification for the Children and Young People’s Early Mental Health Service procured by the Local Authority Children and Families’ Commissioning team early in 2023.

32. Data on self-harm informed discussion at a recent Wiltshire Self-Harm Summit. The opportunity to view the data by different sub-groups of young people provided particularly useful insights which are not available through other data sources. The event, organised by Public Health, was attended by approximately 80 professionals from a wide range of services including schools, hospitals, CAMHS, Local Authority

and the voluntary sector. Feedback was very positive and the outputs from the event are driving action around this agenda going forwards.

Substance use

33. The findings from the survey were used throughout the Substance Use Health Needs Assessment to demonstrate the prevalence of substance use amongst young people in Wiltshire. The data has then gone on to inform key parts of the Substance Use Strategy and delivery plan which will be a focus for the Combating Drugs Partnership over the next 5 years.

Sexual health

34. The findings related to sexual health highlighted the ongoing importance of sexual health services, such as No Worries (a sexual health service specifically for young people), supporting school age children. This helped influence engagement with related services, such as the school nursing service, during the 're-launch' of No Worries. As a result, there was good uptake of promotional resources for the service, and the idea to develop a 'No Worries Lite' model was identified. This model will enable a wider range of settings/ providers to receive training and resources to deliver some basic sexual health advice, support, and signposting for young people.

Future plans

35. This report demonstrates the value of undertaking Children and Young People's Health and Wellbeing Surveys in Wiltshire not only to schools but the wider system.
36. Discussions are underway between colleagues within Public Health and Education and Skills to inform the timing of future surveys. The draft proposal is to repeat this full-length survey every four years across Wiltshire, meaning the next would be in 2025. This will be dependent on funding being maintained within the relevant budgets from central government.
37. In addition, the benefit of gathering more regular data on the emotional wellbeing needs of children and young people has been recognised, and work is underway to prepare for the launch of a new Wiltshire Children and Young People's Emotional Wellbeing Survey in 2024. This is a short survey, free to schools, and includes a subset of questions from the full-length Children and Young People's Health and Wellbeing Survey, which will enable trends to be monitored more frequently. It will be live for pupils to complete between 19th February and 20th March 2024.
38. To increase take-up of the survey among schools and colleges across Wiltshire, an opt-out approach trialled successfully in another local authority area, is being adopted for the new survey, setting an expectation that all schools and further education colleges will take part. The impact of this approach will be monitored and reviewed by colleagues in Public Health and Education and Skills.
39. Reporting arrangements will include setting-based reports for schools and colleges to use in self-evaluation reports, to identify need and plan school-based interventions related to emotional wellbeing. There will also be a Wiltshire wide

report showing the averages for Wiltshire with some analysis related to vulnerability factors.

40. Assuming the new Emotional Wellbeing Survey is a success, the plan is to repeat it every four years in between the full survey, thus providing biannual data on emotional wellbeing. The other development is to enable school-aged children and young people not in school to complete the survey by engaging with providers of Alternative Provision. We will also work with colleagues in Education Welfare to discuss how best to capture the voice of children and young people who are electively home educated. This is being trialled in 2024 when implementing the Wiltshire Children and Young People's Emotional Wellbeing Survey.

41. Table 1 summarises the draft proposal described above for the frequency of children and young people's health and wellbeing related surveys.

Type of Survey	2024	2025	2026	2027	2028	2029
Short Emotional Wellbeing survey	X			X		
Full Health and Wellbeing survey		X				X

Table 1: Draft timetable for future health and wellbeing related surveys

Conclusion

42. This report highlights how quantitative and qualitative feedback on action taken in response to the findings of Wiltshire's Children and Young People's Health and Wellbeing Survey 2021 demonstrates the value of the survey and shows how it can drive improvements in health and wellbeing for children and young people locally.

43. The feedback also highlights the importance of raising greater awareness of the survey reports, and actively encouraging Council colleagues and partners across the system to utilise the data to inform service delivery, commissioning, and strategic planning.

44. It is proposed that the Health and Wellbeing Survey is undertaken every four years with an additional shorter survey on emotional wellbeing in between.

Lead Director: Kate Blackburn, Director of Public Health

Report Author: Sally Johnson, Public Health Strategist (0-25 years)
sally.johnson@wiltshire.gov.uk

Date of report: 19 December 2023

Wiltshire Council

Children's Select Committee

24 January 2024

Ofsted inspection of Wiltshire Council Children's Services

Purpose of report

1. To appraise the Children's Select Committee of the outcome and findings of His Majesty's Inspection Wiltshire Council's Children's Services and points of note.

Background

2. In September 2023, Ofsted conducted an inspection of Wiltshire Council's Children's Services. This involved wide engagement with children and families with lived experience, frontline staff from a wide variety of service areas including commissioning, corporate and political leadership, partner agencies (such as schools, the judiciary, health services, etc) and other key stakeholders.

Main considerations for the committee

3. The inspection (report published 12th December 2023 – see appendix) judged the overall effectiveness of our services to be Outstanding, the highest rank possible. The breakdown of judgements is as follows:

Judgement	Grade
The impact of leaders on social work practice with children & families	Outstanding
The experience and progress of children who need help & protection	Good
The experience and progress of children in care	Outstanding
The experience and progress of care leavers	Outstanding
Overall effectiveness	Outstanding

Key highlights from the findings are as follows:

- a. Children and families benefit from effective early support led by family key workers who respond quickly to meet children's needs. Children in need of help and protection receive a swift and effective response from the Integrated Front Door (IFD) and this is a seamless service during evenings and weekends.
- b. Child protection conferences are timely, and well attended, and lead to strength-based plans that focus on increasing protective factors and reducing harm.
- c. Highly skilled and tenacious workers, including for extra-familial harm, provide intensive and targeted interventions to repair family relationships, prevent children from coming into care and reducing the risk of exploitation.
- d. Children in care, including disabled children, make good progress and live in stable homes. They are supported to stay healthy, to attend and to achieve in their education, to enjoy family time, and to pursue their hobbies and interests.

- e. Social work practice for adoption is strong. Family finding starts as soon as possible for children. Permanence planning is considered well for children and starts at an early stage.
 - f. Foster carers and adopters are well supported and trained in their roles that helps them provide consistent, nurturing care to children.
 - g. Care leavers are supported exceptionally well by caring, compassionate and determined personal advisers.
 - h. The virtual school is ambitious for children and provides effective support and challenge to schools.
 - i. Stable and effective political, corporate and children's services leadership is making a positive difference to children. Cross-council work is highly successful in delivering improved support. Children feature prominently in council strategic plans and the continued investment in children's services, including in transformation, is making a significant difference to an increasing number of children's lives.
 - j. Workers report feeling highly supported by accessible and visible managers and are positive about working for Wiltshire. They are passionate and proud about their work with children and the positive difference they make for them.
 - k. The views and experiences of children and parents are being listened to by political and children's services leaders and acted upon, informing strategic plans and leading to positive changes in practice and service development.
4. Two areas for improvement were identified and our focus continues on these:
- a. The effectiveness and quality of practice to support and safeguard 16- and 17-year-olds who present as homeless.
 - b. The quality and consistency of recording of supervision and frontline management oversight and direction, including the tracking of actions and completion of tasks.
5. Children's Services leadership are very proud of this achievement, acknowledging, as Ofsted did, delivering improvement with the national context of rising and more complex needs post-covid and alongside significant cost-of-living increases.
6. The grading of "Good" for help and protection was strongly disputed by the leadership team and led to a formal complaint being raised with Ofsted. This was not upheld but we maintain our conviction that performance in this area is indeed Outstanding. We are clear that we will never standstill and there is always more to do in such a dynamic field of work. Outstanding of course does not indicate perfection and our detailed Roadmap, as previously shared at Childrens Select Committee, along with the update on our Service Delivery Plans are evidence of our continued focus on improvement.
7. Achieving Outstanding was only possible with the dedication, tenacity and care our staff give to the children and families of Wiltshire every day, we are incredibly proud and grateful to them.
8. We are not complacent and know there is always more to do to ensure we continue to deliver the best services and support. Our business plan will be

updated reflecting areas of focus and presented back to Committee at a future date.

Conclusion

9. The Committee is informed of the outcome of the inspection of Wiltshire Council Children's Services.
-

Appendices

Link to published Ofsted Inspection report:

<https://files.ofsted.gov.uk/v1/file/50235241>

This page is intentionally left blank

Wiltshire Council

Children's Select Committee

24 January 2024

Dads Matter Too Next Steps

This report follows the previous presentation to the committee of the evaluative report completed by the Institute of Public Care, Oxford Brookes, University. The findings noted that through examination of the cases and interviews with fathers and professionals, they were confident that a positive impact in terms of engagement was being achieved. This was as a result of worker persistence; workers having adequate time to build trusting relationships; workers providing bespoke support in terms of the nature of the interventions, and their flexibility around providing this outside of their core hours where required; and due to the skills and knowledge of the Dads Matter Too (DMT) workers.

Note: In health and social care, it's common to hear people who have trouble accessing or engaging with services referred to as "hard to reach", "service resistant" or "non-engaged".¹ Yet, these are often people who feel unheard and ignored, and are not getting the services they need. The responsibility for ensuring access and engagement with services should be with the agencies themselves, not the users (NSPCC, December 2022). The term engagement is used throughout this report for illustrative purposes only.

Based on the findings from pilot evaluation and subsequent service developments, evaluators recommend that:

1. There continues to be a dedicated Dads Matter Too key worker resource to engage and work with fathers who are persistently non-engaging. Experiences from the pilot suggest that, in specific circumstances and contexts, a dedicated worker for the father can be instrumental in achieving change and promoting positive outcomes for the children.
2. Drawing on the lessons from the pilot phase, good practice should also be incorporated into mainstream work with families to achieve sustainable and systemic change. Professional support and consultation for children's social workers offered by DMT key workers and training for this group are both promising elements. Broader sharing and mainstreaming of good practice across the Partnership should be considered, including with the involvement of DMT key workers sharing with other groups of professionals including for example Health Visitors and Midwives how they have involved fathers and 'top tips' for doing so based on the experience from DMT and the broader evidence base.

3. With reference to the characteristics of fathers involved in the pilot phase, the opportunity to refer them with relative ease into substance misuse, mental health and domestic abuse behaviour change support appear important. However, evidence on the effectiveness of the original multi-agency (commissioned) delivery model was limited and highlighted some potential barriers i.e. low take up. The new post-pilot arrangements will need to be monitored to understand their feasibility and effectiveness and to draw out any implications for the optimal way of providing these services (i.e. part of long-term commissioned services and/or some internal provision).
4. Oversight of how DMT is working should continue, including measuring the medium and longer-term impact and outcomes for individual fathers and families (for example using questionnaires and standardised measures) and incorporating a 'fathers' lens into regular practice audits of as well as the development of practice standards.
5. The partnership approach should be further strengthened – the continuation of the Steering Group beyond the pilot phase is welcome – to provide a multi-agency forum for coordination to drive good practice development and synergies across organisations. The Steering Group could also be asked to suggest ways in which the learning from DMT in Wiltshire could be shared more broadly, across the UK. Evaluators at IPC would be very pleased to support such dissemination activities.

Following on from the evaluation, in May 2023, it was agreed that DMT would continue outside of the formal project for a further period of time so that the learning gained could be shared and embedded across the service. This would happen alongside the research project Improving Safeguarding through Audited Father Engagement (ISAFE) the service subsequently agreed to take part in, which seeks to improve engagement with fathers and father-figures. It aims to address the widespread difficulty faced by statutory social work services in routinely and systematically engaging, assessing, supporting, and challenging men in families. ISAFE has been developed as a proactive approach enabling local authorities to lay the foundations for confident, systematic father-inclusive practice throughout their social care provision (Foundations, DfE 2023).

A re-cap of the findings from the project have been set out to provide context for the work that has followed.

Dads Matter Too (DMT) launched in March 2022 with 3 practitioners assigned to what was initially, a 12-month project. The practitioners were to work with fathers who had been deemed "hard to engage". The agreed eligibility criteria also stipulated that the father must be between the age of 16 and 30 and have a child under the age of 1. The service was available to families living in the West and South of the county and military families living in the East. A multi-agency professional group including Turning Point (substance use service), Fearfree (domestic abuse service) and Health Visitors and Midwives were provided with training by Future Men. The 3 practitioners also engaged in training in the Recovery Star (a tool for supporting and measuring change) so that progress could be measured.

Between March 2022 and March 2023, 50 fathers were approached by the DMT workers. 10 fathers did not engage despite significant attempts. The project team were therefore able to successfully engage with 40 fathers, 80% of fathers who had been deemed as being “hard to engage”; between them these fathers had a total of 65 children.

A review of the data informed that of the fathers that did engage, in 18 of the cases (35 children) the level of concern reduced, and they stepped down to a lower level of service, for example Child in Need stepped down to Support Services. The level of concern and service remained the same in 17 cases (22 children) and increased in 5 cases (8 children). Subsequent tracking has informed that of the initial cases, 55% have stepped out of Children’s Services completely.

In addition to the impact on children, use of the recovery star enabled practitioners to measure the progress made by fathers with enhanced ratings being achieved at the end of the intervention in regard to management of their physical and mental health; their independent living skills; their support networks and community engagement; their use of time; their relationships, addictive behaviours and housing, their sense of identity, self-esteem, hope and trust.

Dads Matter Too has since continued with 2 full-time workers. In continuing the project, the geographical and age limitations in respect of the fathers was removed, opening up the provision to all of the SASS teams. As a result of adjusting the eligibility, the threshold for referrals was increased to families whereby the child was subject to a child protection plan/pre-proceedings. Priority was also given to fathers who had experienced a previous child removal or who were themselves care experienced (this accounted for 33% of the fathers we worked with during the pilot).

The intervention workers have since worked with a new cohort of fathers. In total, 20 fathers have closed to date, who between them have 27 children. 11 of these fathers engaged (55%). Of these 11 cases, 5 have closed to Children’s Services; threshold has reduced in 2 of the cases, remains the same currently in 2 cases and increased in 1 case. The DMT workers are currently working with 13 fathers, 9 of whom are demonstrating good engagement and 2 inconsistent engagement, the remaining 2 are new cases.

In addition to their direct work, since the pilot concluded, the DMT practitioners have provided consultations to workers within the SASS teams who are having difficulty engaging fathers who do not fit the criteria for DMT. They have also provided mini training sessions with more planned to take place in early 2024. The team attended the Community Care Live Event with two of the fathers who shared their experiences with approximately 180 audience members. In March 2024, the team are due to present at an SVPP workshop, and they will also be delivering a session in respect of engaging with fathers.

Another avenue that has been progressed, which has been a real success, has been the development of a group for fathers which has been named “Lads to Dads”. This weekly group has been available to all fathers, not just those working with DMT, and was developed after practitioners highlighted a gap in service provision for fathers. Fathers with children aged 2 and under were invited to attend. Each of the 8 sessions had a theme i.e. mental health, relationships, the expectations placed on fathers etc. It took place online at lunchtime so that it was accessible by fathers who work. The DMT workers have reflected how initially, the fathers were quiet and hesitant about sharing their views, however as the group has progressed, they engaged really well, shared their experiences, and offered support and advice to other fathers. They also set up a WhatsApp group so that they can support each other outside of the group. Towards the end of the initial group, the fathers have been introducing their children on screen. At the end of the group, some of the fathers opted to meet in person.

While there have been many positives of the work undertaken to date, what has become apparent is that reaching a point of engagement is much harder when the father’s child had become subject to child protection planning. There was more resistance and even with the tenacious attempts by workers, it took a lot longer to engage these fathers and several of them have not engaged, with this being reflected in the figures above (55% engagement achieved as opposed to 80% when the criteria did not include threshold).

It is acknowledged that occupying a place of hopelessness has become the norm for many of these fathers with a position of hope being perceived as an unusual and unsafe place for them to be; the additional pressure that child protection planning can introduce can add to the fathers’ feelings of being overwhelmed. It also appeared that being introduced to fathers at a time when statutory child protection processes were initiated, reduced the fathers trust in workers as they could be seen to be part of the process that is there to monitor their care of their child, as opposed to a form of support that could assist them in achieving their goals. The new cohort of fathers are in many ways different from the cohort during the pilot (which included cases at Support and Child in Need) with an increased prominence of more complex issues including high levels of mental health difficulties. Some were subsequently sent to prison, others were at a point of crisis, some engaged to a degree, but it became apparent quickly that they were not at a point of seeking to make changes in their lives. While our workers have subsequently been able to engage a number of these fathers, it has reinforced the importance of practitioners engaging fathers and adopting a father inclusion standpoint from a very early point.

A further reflection has been that while the project was established for fathers of children under the age of 1, due to the additional vulnerability identified for children of this age, there have been requests for support in engaging and working with fathers who are particularly difficult to engage with, particularly challenging and anti the local authority for older children. This has evidenced that in addition to operating at the threshold of child protection, the current provision is not entirely reflective of the need within the service in terms of criteria relating to the child’s age.

Within Wiltshire, 3 of the Support and Safeguarding Teams were provided with ISAFE training in respect of their engagement with fathers (SASS East; North and West 2). A baseline audit was completed on cases from these teams prior to the training taking place and a review audit was completed some months after the training so that any impact of the training could be captured. In November 2023 feedback was provided in respect of the research undertaken pending their full evaluation which is due in the Summer of 2025. Managers whose teams received the training fed back that while there were some logistical issues, the training provided to their teams in respect of engaging with fathers had been positively received. The 2 teams that acted as the comparison team (SASS South and West 2) expressed a keenness to be able to access the same training with our Principle Social Worker taking this forward.

The ISAFE presentation informed that of the 4 local authorities whose data had been examined to date, Wiltshire had the best starting point in terms of the % of fathers named on the child's records; the % of fathers whose contact details were recorded on the system and the % of fathers invited to the initial and review child protection conferences.

Following the 3 SASS teams receiving the ISAFE training, there was an additional increase in the % of cases that contained contact details for fathers and also, the % of fathers that attended the initial and review child protection conferences.

The qualitative perspective has been gained through our standard auditing process between March and September 2023, auditors have been asked to consider our engagement with fathers across 20 different themed audits with a focus on assessments, case recordings, planning and reviews. 429 responses have been received in respect of this key line of enquiry, 7% were graded outstanding in this area; 76% good and 17% developing. It is of note that SASS South, who did not receive the ISAFE training, still achieved 85% good and 2% outstanding gradings within this key line of enquiry while West 2 who also did not receive the training achieved 71% good and 12% outstanding gradings in this area. This shows how embedded practice is with fathers already in Wiltshire.

Next Steps

As outlined, Dads Matter Too continued outside of the formal project to provide an opportunity for learning from the project to be embedded while the ISAFE training was provided. With feedback from ISAFE having been provided (and considered alongside our general audits), now is an appropriate time to consider the next steps in terms of our Dads Matter Too provision.

Acknowledging that DMT was never intended to become a permanent specialist team, as we want to progress the culture change on a wider system scale, we will continue to embed this across all SASS teams. Being embedded within the SASS teams will introduce additional learning/shadowing opportunities. We know that intervention is

more beneficial in CiN than the threshold of child protection or above, its effectiveness is at a much lower level, specifically at Support level.

We are a local authority demonstrating positive practice in regard to our work with fathers and it is hoped that if fathers receive reinforcement that they are important from their initial contact with services (including universal services), we may in the future reach a point at which we will experience fewer hard to engage fathers.

The Integrated Care Board BANES, Swindon and Wiltshire multi agency Safeguarding Unborn Babies and Under 1s Steering group sitting within the Safeguarding Vulnerable People's Partnership arrangements. continues to work on whole system and practice improvements across the partnership including a focus on how we engage and work with fathers within health agencies particularly. A recent audit identified that this remains an area of focus with the findings from the Dad's Matters Too Project supporting these improvements. Partner agencies will also be asked to provide assurance and an assessment of their current work in this area in engaging/working with fathers and partners. We will continue to support partners learning. There is multi agency virtual summit for Safeguarding Unborn Babies and Under 1's planned for the 4th March which includes learning on how we work with and engage fathers, this will include consideration of the term engagement and alternatives to this we could use in Wiltshire as a partnership.

We have received a number of enquiries about the project from other Local Authorities following the session at Community Care event and these will feed into our profile and support within the region and nationally and our Sector Led Improvement offer.

Netty Lee
Head of Support and Safeguarding

Sam McFaul
Team Manager Specialist Assessment and Family Time Team

January 2024

Appendix

[Why language matters: reframing responsibility for accessing services | NSPCC Learning](#)

Wiltshire Council

Children's Select Committee

24 January 2024

Executive Response to the Final Report of the Youth Provision and Area Board Youth Funding Task Group

Purpose of the report

1. To present the response of the Cabinet Member for Children, Education and Skills and Cabinet Member for Governance, I.T., Broadband, Digital, Licensing, Staffing, Communities and Area Boards to the Final Report of the Youth Provision and Area Board Youth Funding Task Group.

Background

2. On 21 September 2023 the Children's Select Committee endorsed the Final Report of the Task Group.
3. The Committee resolved to refer the following Task Group's recommendations to the relevant Cabinet member for response at the Committee's next meeting on 31 October 2023.
4. The discussion about the report at the committee emphasised the importance of partnership working with the youth sector and the need to make the most of the budget to support youth provision. While no amendments were made to the report, the committee agreed that as the subject of the report encompassed support to young people and the role of Area Boards, the report needed to be considered by the cabinet members responsible for both those areas.

Executive response to the Task Group's recommendations

Recommendation No.1	The Council develops an overarching youth strategy to bring together youth provision from within the Council with Area Boards, youth providers and external agencies. A 'product owner' could be used who is not responsible for delivery but could be responsible for co-ordinating the different strands of activity, connecting back to the strategy.
Reason for recommendation	There is currently no one single team or individual with oversight and tasked to ensure that the Council is meeting its responsibility with regards to s507b.

	<p>The Council's focus is on its targeted services for young people. Part of its statutory duty is the communication of a Wiltshire-wide offer to young people.</p> <p>Youth service providers are asking for a longer term, strategic approach from the Council to provide a sustainable future for the provision of youth services.</p>		
Cabinet member	Cllr Laura Mayes	Lead Officer	Lucy Townsend
Action		Success criteria	
<p>There is widespread support for an overarching strategy that responds to the needs of young people and this is also highlighted in the statutory guidance to local authorities. We can confirm that a strategy will be developed that looks at the role of Area Boards, youth providers and external agencies. This will be developed in collaboration with key partners such as the Wiltshire Youth Partnership.</p> <p>Lucy Townsend, Corporate Director People (and DCS) is the responsible officer for young people. The Lead Member for Children, Education & Skills is the appropriate statutory Lead Member for this area of policy.</p> <p>Two Wiltshire Council leads are in place as the key links between Communities and Childrens Services; Rhys Schell, Service Manager for Engagement and Partnerships and Andrew Griffiths, Service Manager for Young People.</p>		Implementation of strategy	
Target date			
September 2024			

Recommendation No.2	<p>The Council sets out a timeframe to meet the incoming statutory guidance to local authorities. It should ensure, with the support of stakeholders, that the needs of young people and current provision is mapped and an annual plan for young people in Wiltshire is developed. In doing so, it may want to seek guidance from the NYA on developing this approach. There would be benefits too in learning from the FACT project in developing a single source of information.</p>
Reason for recommendation	<p>One expectation in the statutory duty is for local authorities to take a strategic lead and the new guidance is likely to consolidate this</p>

	<p>expectation by outlining a process and structure for councils to take this forward.</p> <p>Effective partnerships should be developed with other providers and community partners to plan and deliver activities.</p>		
Cabinet member	Cllr Laura Mayes	Lead Officer	Lucy Townsend
Action			Success criteria
<p>The beforementioned strategy will address and review the statutory guidance for local authorities, the needs of young people and current activity provision. Conversations with the DCMS and NYA will form part of the formation of the strategy. There is a concerted effort to increase the linkage between the work of the FACT programme and the work delivered with young people through the Area Boards. A conversation has been held with the FACT steering group regarding the task groups recommendations.</p>			<p>Implementation of strategy</p> <p>Increased link up between FACT programme and Area Boards</p>
Target date			
September 2024			

Recommendation No.3	<p>The proposal by the youth partnership to develop a tiered system for youth grants should be considered, as it complements the work already being piloted by the grant assessment panel to allow for differences in provider capacity and geographic cover.</p>		
Reason for recommendation	<p>A change in approach to allocating the Area Board youth funding budget is needed to ensure that money allocated for youth activities is spent effectively to make the best use of limited resources.</p> <p>An underspend of £105,479 of allocated youth budget in the 2022/23.</p>		
Cabinet member	Cllr Ashley O'Neill, Cllr Laura Mayes	Lead Officer	Lucy Townsend
Action			Success criteria
<p>The council will be reviewing the grant criteria in line with the new statutory guidance and the recommendations from the OS task panel. This will take place alongside the youth strategy development.</p>			<p>Introduction of new grant funding criteria</p>

A tiered system would be incredibly challenging to introduce, however, the functionality sought can be picked up through existing, effective processes. The Grant Assessment Panel can enable applicants to work across more than 3 areas, submit more than 2 applications or request in excess of £5k minimum. This has already enabled multiple organisations to receive exceptions to apply multiple times across more than 3 areas.	
Target date	
September 2024	

Recommendation No. 4	The criteria for Area Board youth grants is amended to remove the requirement for organisations to apply for funding for a ‘new’ project and allow for repeat funding of ongoing projects that are meeting the needs of young people effectively.		
Reason for recommendation	The Area Board youth grants have a short term, project-based focus. This restricts applications from organisations that are providing ongoing, open access youth provision. There could be more value in having greater flexibility in funding arrangements.		
Cabinet member	Cllr Ashley O’Neill, Cllr Laura Mayes	Lead Officer	Lucy Townsend
Action			Success criteria
Linked with recommendation 3, there will be a review of the Area Board grant criteria which will consider this. Area Boards are unable to guarantee year on year funding due to the annual budgeting process, however, successful projects that are able to demonstrate delivery to council and local objectives will be able to apply for funding support across consecutive years. Projects should not be reliant upon Area Board funding and ongoing core operational costs will remain ineligible.			Introduction of new grant funding criteria
Target date			
September 2024			

Recommendation No.5	The requirement to promote funded activities should sit with the grant holder who is more likely to have stronger local communication networks than the Council does.		
Reason for recommendation	There is a weakness to the approach of relying on Area Boards to disseminate information to young people when some Area Boards do not have good community links.		

	The Council communication outlets are not really aimed at promoting individual activities (but could increase general awareness of the Area Board funding).		
Cabinet member	Cllr Ashley O'Neill	Lead Officer	Lucy Townsend
Action			Success criteria
<p>The All Together platform provides the opportunity for all locally delivered young person activities to be added and communicated. All successful Area Board youth grant applicants will be requested to add their projects and activities onto the website through the terms and conditions of their grant. This platform is being promoted through the Area Boards and the Engagement and Partnerships service.</p> <p>Whilst we can encourage the applicants to promote their activities to young people, the statutory duty for this remains with the council.</p>			All Together platform usage figures
Target date			
April 2024			

Recommendation No.6	Consideration should be given to funding or part funding the development and infrastructure of Wiltshire's youth sector, through the youth partnership. This would be an investment with longer term aims of supporting the development of this sector and increasing the likelihood of drawing down external funding for the county.		
Reason for recommendation	The reason is incorporated into the recommendation.		
Cabinet member	Cllr Ashley O'Neill, Cllr Laura Mayes	Lead Officer	Lucy Townsend
Action			Success criteria
We have been really encouraged by the introduction of the Wiltshire Youth Partnership and we will continue to support its development through Officer support. We are happy to provide support funding that helps to build the resilience of the Wiltshire Youth Partnership, however, further conversation needs to take place between the authority and the partnership to understand what is needed. The council is awaiting a better understanding of			Support funding in place, with agreed outcomes

<p>how the funding would be used and the extent of the support that is needed.</p> <p>The Area Board youth funding needs to be protected to fulfil the vital role of supporting projects at a local level that support young people in their communities. Any funding for the partnerships would be in addition to this.</p>	
Target date	
April 2024	

Recommendation No.7	Area Boards need to be actively encouraged to work with a LYN (Local Youth Network), Youth Forum, or partner-led multi-agency group, perhaps identifying an elected member for each Area Board to take the lead in setting up or maintaining community involvement in the provision of youth activities.		
Reason for recommendation	The Area Board Youth Engagement Strategy sets out how Area Boards should develop their youth funding investment approach. It details three key mechanisms to enable Area Boards to understand the needs of young people. Six area boards are operating without a LYN or Youth Forum, one of the key mechanisms identified in the strategy. The impact of this variance is an inconsistent offer for young people across the county.		
Cabinet member	Cllr Ashley O'Neill, Cllr Laura Mayes	Lead Officer	Lucy Townsend
Action		Success criteria	
Agreed and this is a current requirement for each Area Board as found within the Area Board handbook. Reiteration of this position can be issued to Area Boards at the start of the new financial year.		All 18 Area Boards with an active youth working group	
Target date			
April 2024			

Recommendation No.8	Explore with the Youth Council how to best support the Area Boards in ensuring the voice of young people is represented in decision-making.		
Reason for recommendation	Young People's voices are not always being heard when funding impacting young people is being decided.		

Cabinet member	Cllr Ashley O'Neill, Cllr Laura Mayes	Lead Officer	Lucy Townsend
Action			Success criteria
<p>There are new Youth Council elections taking place in February/ March 2024. Conversations have already started to better link the Area Boards with the Youth Council. It is proposed that the Shadow Youth Council roles for Children's and Communities are asked to support the linking and communication between the Youth Council with the Area Boards.</p> <p>At an Officer level, there is currently recruitment taking place in the Youth Voice team and the requirement for updating and communicating with the Area Boards will be considered as part of these emerging roles.</p>			Increased engagement between Youth Council and Area Boards
Target date			
September 2024			

Recommendation No.9	Explore how to facilitate increased engagement between officers delivering services for young people and Area Boards when community issues have been identified.		
Reason for recommendation	There is scope for further integration between the youth work being provided in the community and supported by Area Boards and the targeted provision for young people delivered directly by the Council. There were examples of officers working closely with Area Boards on issues relevant to their area and it might benefit Area Boards and officers if this could become standard practice.		
Cabinet member	Cllr Ashley O'Neill, Cllr Laura Mayes	Lead Officer	Lucy Townsend
Action			Success criteria
<p>A closer working relationship has been established between Childrens Services and Communities. The teams will work collaboratively on the strategy referred to in recommendation 1 which will support this to happen and regular meetings are in place between key officers.</p> <p>Additionally, it is proposed that each Area Board Councillor lead for Young People should have regular meetings with the Portfolio</p>			

holder for Children’s Services and the Portfolio holder for Area Boards to improve the communication between areas.	
Target date	
September 2024	

5. We welcome this report from the Overview and Scrutiny task group and are already working towards implementing many of the recommendations provided. The development of an overarching strategy that focuses on the provision of services and activities that are available to young people across Wiltshire will facilitate the delivery of many of these recommendations. A review of the Area Board grant funding will take place alongside this strategy.

Proposal

6. To note the executive response to the Final Report of the **Youth Provision and Area Board Youth Funding Task Group**.

Cllr Laura Mayes, Cabinet Member for Children’s Services, Education and Skills

Officer contact: Julie Bielby, Senior Scrutiny Officer, 01225 718702,
julie.bielby@wiltshire.gov.uk

Children's Select Committee (CSC) – Forward work programme Agenda items for the committee

Standing items (at all meetings)

Title - Details / purpose	Type	Report author / lead officer
Update from Wiltshire Youth Voice	Written	Joe Sutton
School Ofsted Judgements	Written	Andrew Best
DfE Changes - Update from Department for Education	Written	David Harris
Working together to improve school attendance	Written	Kathryn Davis
Schools Forum's update	Written	Lisa Pullin
Corporate Parenting Panel update	Written	Lisa Pullin
NEW Safety Valve update	Written	Ben Stevens
TBC Safeguarding update	Written	tbc
Directors' update Cabinet Member and Portfolio Holders' update Chair's update Verbal updates highlighting any key issues (current or emerging), successes or milestones in their respective areas since the last meeting of the committee, which may not require a full agenda item and are not covered elsewhere on this agenda.	Verbal	All directors Cabinet Members and Portfolio holders Chair

Future items for consideration by the Children’s Select Committee

Tuesday 12 March 2024, 10.30am			
<i>Pre-meeting briefing topic: Children and Young Peoples Mental Health services and developments</i>			
	Title Details / purpose and Timeframe (if applicable)	Origins / history	Report author / lead officer
	SEND Provision (Part 2) – Focus on provision within mainstream schools to include Resource Bases.	Deferred from Oct 2023 meeting	Melissa Hardwell Cate Mullen
	Special Guardianship Orders Report	Following on from Annual Adoption Report, Sept 2023	Jen Salter
Substantive	Report from Joint Rapid Scrutiny Emotional Wellbeing and Mental Health Strategy		
Informative	Business plan and action plan update (every 6 months)	CSC 20 September 2022 CSC 6 June 2023	Directors
Informative	Young Carers – Review the service specifications before commissioning of future provision.	CSC 31 October 2023	Mel Nicolaou Alison Elliott
Informative	Early Years Strategy	CSC 6 June 2023	Helean Hughes

Thursday 6 June 2024			
<i>Pre-meeting briefing topic: Corporate Parenting Panel – strategic priorities</i>			
	Title Details / purpose and Timeframe (if applicable)	Origins / history	Report author / lead officer
	Stable Homes Built on Love – update on actions in response to national review of childrens’ social care. To include learning from pilot projects and other local authorities.	CSC 31 October 2023	Tim Sandle / Jen Salter

Tuesday 16 July 2024			
<i>Pre-meeting briefing topic:</i>			
	Title Details / purpose and Timeframe (if applicable)	Origins / history	Report author / lead officer
	Stable Homes Built on Love – update on actions in response to national review of childrens’ social care. To include learning from pilot projects and other local authorities.	CSC 31 October 2023	Tim Sandle / Jen Salter

Thursday 5 September 2024			
<i>Pre-meeting briefing topic: Corporate Parenting Panel – strategic priorities</i>			
	Title Details / purpose and Timeframe (if applicable)	Origins / history	Report author / lead officer
	Childcare Sufficiency – Progress update	CSC 31 October 2023	Lucy-Anne Bryant

Longer term items			
	Title Details / purpose and Timeframe (if applicable)	Origins / history	Report author / lead officer

Items considered in the last 12 months

Meeting date (link)	Title Outcome / actions	Origins / history	Report author / lead officer
25 October 2022	FACT update		
17 January 2023	Roadmap to Excellence		Jen Salter
	National Review into Safeguarding Children with Disabilities and Complex Health Needs in Residential Settings		Jen Salter
	Shaping the Future Programme with Schools – verbal update		Helean Hughes
	Outcome of the Rapid Scrutiny on High Needs Block Funding		
14 March 2023	Independent Care Review of Children’s Social Care and National Review into the murders of Arthur Labinjo-Hughes and Star Hobson	Requested by officers	Jen Salter Fiona Hayward
	“Shaping the future” programme with schools - update on the model chosen	CSC 8 June 2022 Schools Ofsted judgements	Andrew Best Helean Hughes
	Standing Advisory Council on Religious Education (SACRE)	Requested by officers	Andrew Best Helean Hughes
	Performance Outcomes Report Academic Year 2021-2022 - Pupil Performance in Public Tests and Examinations	Deferred from January meeting	Andrew Best Helean Hughes
6 June 2023	Family Hub Contract	Cabinet Item	Gary Binstead Jen Salter
	Business plan and action plan update	Regular item (6 monthly)	Directors
	Child Poverty	Current FWP	Lucy Townsend
12 July 2023	FACT – interim report data set and Family Help programme	CSC 25 October 2022	Simon Thomas
	Safeguarding processes – outcome of the review by the Institute of Public Care.	CSC 20 September 2022 (Jen Salter – Director’s update) CSC 8 June 2022	Jen Salter/Professor Katy Burch (Oxford Brookes)

		Chair's announcement (Lucy Townsend)	
	Update on building developments at Silverwood	Cabinet item – June 2023	Melissa Hardwell
	Corporate Parenting Panel annual report	Regular item (annual). Reviewed by Standing Task Group 26 June	Netty Lee
	Community Health Services	HSC (4 July)	Fiona Slevin-Brown (ICB)
	Child, Youth and Family Voice Team annual report	Regular item (annual)	Joe Sutton
21 September 2023	Emotional Wellbeing and Mental Health Strategy	ICB proposal	
	Outcome of the SEND LGA Peer Review	Officers requested	Helean Hughes/Richard Hanks
	Children missing out on education	Standing task group reviewed 6 Sept.	Kathryn Davis
	Elective Home Education	Standing task group reviewed 6 Sept.	Kathryn Davis
	Youth Provision and Area Board Youth Funding Task Group Report.	17 March 2020 endorsed by O&SMC	Cllr Jo Trigg
	Outcome of the Dads Matter Too multi agency project.		Professor Katy Burch
	Annual Adoption Report	Regular item (annual)	
31 October 2023	Briefing – Out of County education/Childcare Sufficiency	Requested by Committee	Helean Hughes/Richard Hanks
	Young Carers_ Update on strategy for future provision	Requested by committee	Mel Nicolaou/Netty Lee
	SEND – Assessment and Provision		Cate Mullen/Melissa Hardwell
	Childcare/Early Years Sufficiency		Lucy-Anne Bryant
	LGA SEND peer review – Action Plan		Richard Hanks
	Stable Homes Built on Love – Update		Jen Salter/Tim Sandle
7 December 2023	Draft Safety Valve Management Plan	All member briefing on Safety Valve Programme, 12 October 2023	Ben Stevens

Rapid Scrutiny

21 September 2023	Review development of the ICB’s Emotional Wellbeing and Mental Health strategy. Joint rapid scrutiny to involve Children’s Select and Health Select Committee members. To take place Nov/Dec 2023 and present findings in January 2024.	Endorsed by CSC (21.09.23) and HSC (05.09.23).	Jane Rowland, Mental Health Transformation Lead, BSW ICB
-------------------------	---	--	--

Wiltshire Council

Children's Select Committee

24 January 2024

Proposed overview and scrutiny activities

Emotional Wellbeing and Mental Health Strategy

The Integrated Care Board (ICB) presented a summary of the strategy development work to date and emerging themes to Health Select Committee on 5 September 2023. This was reported to Children's Select Committee on 20 September 2023.

The ICB would welcome some involvement from overview and scrutiny, this would be both to input or comment on the emerging themes of the strategy, as well as providing some familiarity with the strategy.

The proposed next step is a rapid scrutiny exercise, jointly with the Health Select Committee, to consider the draft strategy.

This would also include a review of the findings of the task group into Children and Young People's Mental Health Service in 2018.

The ICB would still bring plans for the future commissioning of Children and Young People Mental Health services once available.

The committee is invited to consider whether it supports the establishment of the rapid scrutiny (to take place in January / February 2024).

Members are also invited to put their name forward if they would like to take part.

Children and Young Peoples Mental Health services and developments

The current contract is due for re-commissioning in April 2025. In the lead up to this the council will be carrying out the reviews and assessments that would be expected. This is an opportunity for overview and scrutiny to get involved in this process.

It is anticipated that the task group would carry its work over 5 meetings (scoping, 3 research meetings, conclusion / final report) between February / March and June 2024.

The committee is invited to consider whether it supports the establishment of the task group.

Members are also invited to put their name forward if they would like to take part.

It should be noted that the committee had previously been hoping to set up a task group focusing on Children and Young People Mental Health and the following members had expressed an interest: Caroline Corbin, Jo Trigg and Mark Verbinnen.

This page is intentionally left blank